

# JetStor<sup>®</sup>

Storage. Solutions. Support.

DAS / JBOD

2U

26 BAY

## JetStor 824JX

DAS / JBOD SYSTEM



### LATEST 12GB SAS 3.0 DAS/JBOD SYSTEM

The JetStor 826JX is a 26-bay cost-effective DAS (Direct Attached Storage) or JBOD (Just a Bunch Of Disks) for server expansion. It is also a RAID expansion enclosure for JetStor SAN (Storage Area Network) FX and iX series.

The JetStor JX DAS/JBOD solutions set a new storage standard for direct-attached storage. The series provides a smart and elastic runtime configuration of the 10 x 12Gb/s SAS wide ports support, and allows IT managers fully utilizing the 480Gb/s data bandwidth per system for various applications. The JX series is fully tested with various configurations and can deliver up to 24,000MB/s<sup>1</sup> sequential read and 20,000MB/s<sup>1</sup> sequential write in throughput and over end-to-end 4.2 million<sup>2</sup> sequential IOPS. It is ideal for video editing, high performance computing, cloud storage, streaming, broadcasting, virtualization, and datacenters.

### SINGLE OR DUAL-ACTIVE (ACTIVE/ACTIVE) CONTROLLER SAN SYSTEM

JetStor JX DAS/JBOD systems offer fully redundant components for all major functions, including dual controllers, power supplies, fan modules, host ports, and expansion ports. Besides hot swappable components, the firmware is able to update without any system down time and balancing IO loading through multiple paths and dual controllers.

### VERSATILE TOPOLOGIES & FLEXIBLE CONFIGURATIONS

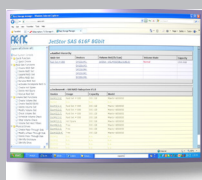
The DAS/JBOD features all 12Gb/s SAS topologies and permutations of all host and expansion port configurations. The series supports all 12Gb/s SAS topologies, including Cascade, Reverse, and Tree, and can be deployed freely to fit various connections to the host servers. With up to 10 x 12Gb/s SAS ports support per system, this feature is crucial for users to plan a well-defined resource arrangement to achieve highly utilized performance and capacity of the system.

### FEATURES

- 26 hot-swappable drive bays in a rackmount 2U chassis
- Single or Dual SAS JBOD controller module
- Latest 12Gb SAS 3.0 technology
- SAS JBOD controller module consist of 5 x 12Gb/s SAS wide ports (SFF-8644)
- Global & dedicated hot spares
- Flexible expansion
- Green Technology
- Multipath Storage Access
- Zoning
- Free telephone & email support.

### WARRANTY

- Three to five years on disk drives, one year on BBM, five years on all other components.
- Optional advanced replacement program ships drive replacements within 24 hours. Optional on-site service also available.



### CubeView CMS

Proactively manage, configure & monitor all JetStor storage systems from any browser.

[www.acnc.com](http://www.acnc.com)  
[sales@acnc.com](mailto:sales@acnc.com)  
[800.213.2667](tel:800.213.2667)



# JetStor®

Storage. Solutions. Support.

## SPECIFICATIONS

# JetStor 826JX

DAS / JBOD SYSTEM

**12Gb  
SAS  
3.0!**



Hardware	JetStor SAS 826JX / 826JXD	
I/O Controller	Single-upgradable (826JX) or Dual-active controller (826JXD)	
Host Connectivity (per controller)	5 x 12Gb/s SAS wide ports (SFF-8644)	
Drive Type	<ul style="list-style-type: none"> <li>• 2.5" SAS, NL-SAS HDD</li> <li>• 2.5" SAS, SATA SSD (6Gb MUX board needed for 2.5" SATA drives in dual controller system)</li> </ul>	
HBAs & RAID Cards Supported	Broadcom (LSI) 12Gb/s & 6Gb/s SAS HBAs / Broadcom (LSI) 12Gb/s & 6Gb/s RAID Cards ATTO 12Gb/s & 6Gb/s SAS HBAs / ATTO 12Gb/s & 6Gb/s RAID Cards	
Expansion Capabilities	Up to 10 expansion units behind JetStor SAN storage	
Dimension (H x W x D)	19" Rackmount, (2U 26-bay, LFF) : 3.5 x 17 x 19 in	
Power Supply	80 PLUS Platinum, two redundant 770W (1+1)	
	AC Input: 100 - 127V 10A, 50-60Hz 200 - 240V 5A, 50-60Hz	DC Output: +12V 63.4A +5VSB 2.0A
Fan Module	2 x hot pluggable/redundant fan modules	
Host & Expansion Port Configuration	<ul style="list-style-type: none"> <li>• Automatic configuration</li> <li>• Recommended configuration: 5 IN, 4 IN 1 OUT, 3 IN 2 OUT</li> </ul>	
SAS Topology	<ul style="list-style-type: none"> <li>• Cascade</li> <li>• Reverse</li> <li>• Tree</li> </ul>	
Security	<ul style="list-style-type: none"> <li>• Zoning</li> </ul>	
Green & Energy Efficiency	<ul style="list-style-type: none"> <li>• 80 PLUS Platinum power supply</li> <li>• Wake-on-LAN to turn on or wake up the system only when necessary</li> </ul>	
Host Operating Systems Support	<ul style="list-style-type: none"> <li>• Windows Server 2008, 2008 R2, 2012, 2012 R2, 2016</li> <li>• SLES 10, 11, 12</li> <li>• RHEL 5, 6, 7</li> <li>• CentOS 6, 7</li> <li>• Solaris 10, 11</li> <li>• Free BSD 9, 10</li> <li>• Mac OS X 10.11 or later</li> </ul>	
Software-Defined Storage & Hyper-Converged Solution Support	<ul style="list-style-type: none"> <li>• VMware vSAN</li> <li>• Microsoft Windows Server Storage Spaces</li> </ul>	
Regulatory	CE, FCC, BSMI, VCCI, KCC	
Temperature	<ul style="list-style-type: none"> <li>• Operating temperature : 0 to 40°C</li> <li>• Shipping temperature : -10 to 50°C</li> </ul>	
Relative Humidity	<ul style="list-style-type: none"> <li>• Operating: 20% to 80% non-condensing</li> <li>• Non-operating: 10% to 90%</li> </ul>	

## JBOD FEATURES

- 26 hot-swappable drive bays in a rackmount 2U chassis
- Single or Dual SAS JBOD controller module
- Latest 12Gb SAS 3.0 technology
- SAS JBOD controller module consist of 5 x 12Gb/s SAS wide ports (SFF-8644)
- Global & dedicated hot spares
- Power supply and cooling system contained in 1 module for efficient cooling
- Two 770W redundant hot swappable power supplies
- Incorporates a cableless design for maximum signal integrity
- JetStor CubeView Central Management Software
- System LED indications
- System voltage monitoring

## MANUFACTURER



[www.acnc.com](http://www.acnc.com)  
[sales@acnc.com](mailto:sales@acnc.com)  
 800.213.2667

### Advanced Computer & Network Corporation

5001 Baum Boulevard, Suite 680  
 Pittsburgh, PA 15213  
 Phone: 412.683.9010  
 Fax: 412.683.9070  
 Support: 800.213.2667  
 Europe: +44 (0)1628 891616  
 GSA Schedule: GS-35F-0694J  
 COSTARS Contract# 003-434

## SYSTEM FEATURES

- 12Gb SAS 3.0 DAS/JBOD System with optional Dual-Active(Active/Active) controller
- High Performance & High Throughput
- Wide Ranging Product Portfolio
- Latest 12Gb SAS 3.0 technology
- Dual Active Controllers & High Availability Design
- Redundant & Hot-pluggable Components
- Multipath Storage Access
- Flexible Expansion
- Versatile Topologies & Flexible Configurations
- Zoning
- Runtime Configuration
- JetStor CubeView Central Management Software
- Interoperability
- Wide Compatibility
- Green Technology